

PRESTON #1

Commencing at the intersection of State Street and 200 East;

Thence east along 200 East 1.15 miles to the city limit boundary;

Thence south .84 miles, then east 790 feet, following the original city limit boundary, to 800 East;

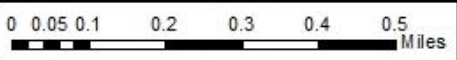
Thence south on 800 East to 1600 South;

Thence west on 1600 South to State Street;

Thence north on State Street to the point of beginning.

Preston 1 Voting Precinct

Preston 1



Sources: Esri, HERE, Garmin, USGS, Intermap, INCREMENT P, NRCan, Esri Japan, METI, Esri China (Hong Kong), Esri Korea, Esri (Thailand), NGCC, (c) OpenStreetMap contributors, and the GIS User Community, Esri, HERE, Garmin, (c) OpenStreetMap contributors, and the GIS user community

Date: 4/11/2022

PRESTON #2

Commencing at the intersection of State Street and Oneida Street;

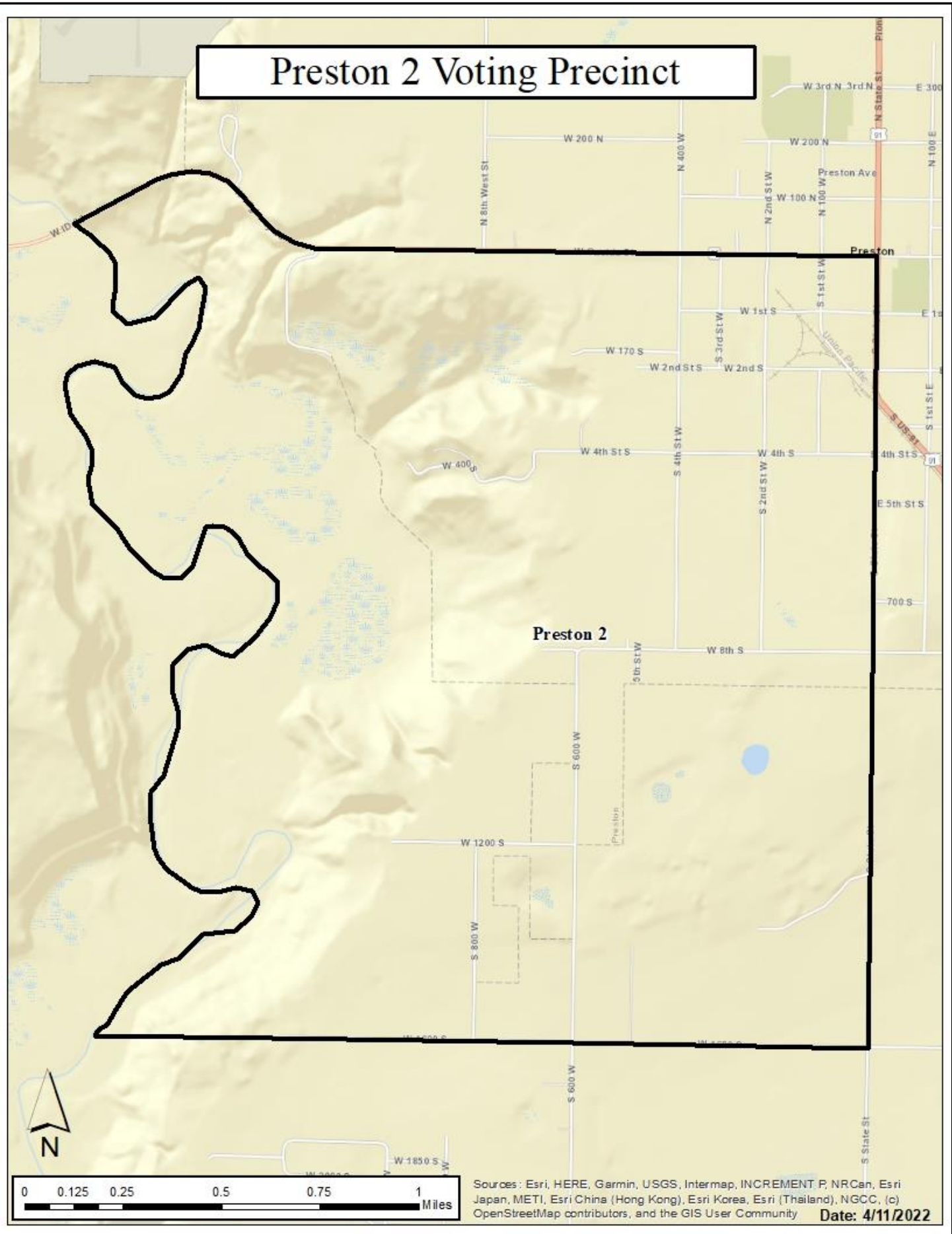
Thence south on State Street to 1600 South, which is also the township line dividing T15 and T16;

Thence west along said boundary to the Bear River;

Thence north following the Bear River to Highway 36;

Thence east on Highway 36 to the point of beginning.

Preston 2 Voting Precinct



Sources : Esri, HERE, Garmin, USGS, Intermap, INCREMENT P, NRCan, Esri Japan, METI, Esri China (Hong Kong), Esri Korea, Esri (Thailand), NGCC, (c) OpenStreetMap contributors, and the GIS User Community **Date: 4/11/2022**

PRESTON #3

Commencing at the intersection of State Street and Oneida Street;

Thence north on State Street, State Street turns into Riverdale Dugway Road, following it to the top of the Dugway Hill;

Thence west along the river bluff until it reaches the Bear River;

Thence southwesterly along the Bear River to Highway 36;

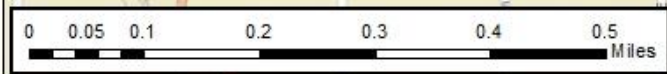
Thence east on Highway 36 to the point of beginning.

PRESTON #4

Commencing at the intersection of State Street and Oneida Street;
Thence north on State Street to 300 North;
Thence east on 300 North to 200 East;
Thence north on 200 East to 400 North;
Thence east on 400 North approximately 1 mile to Worm Creek;
Thence south along said creek to Oneida Street;
Thence west along Oneida Street to the point of beginning.

Preston 4 Voting Precinct

Preston 4



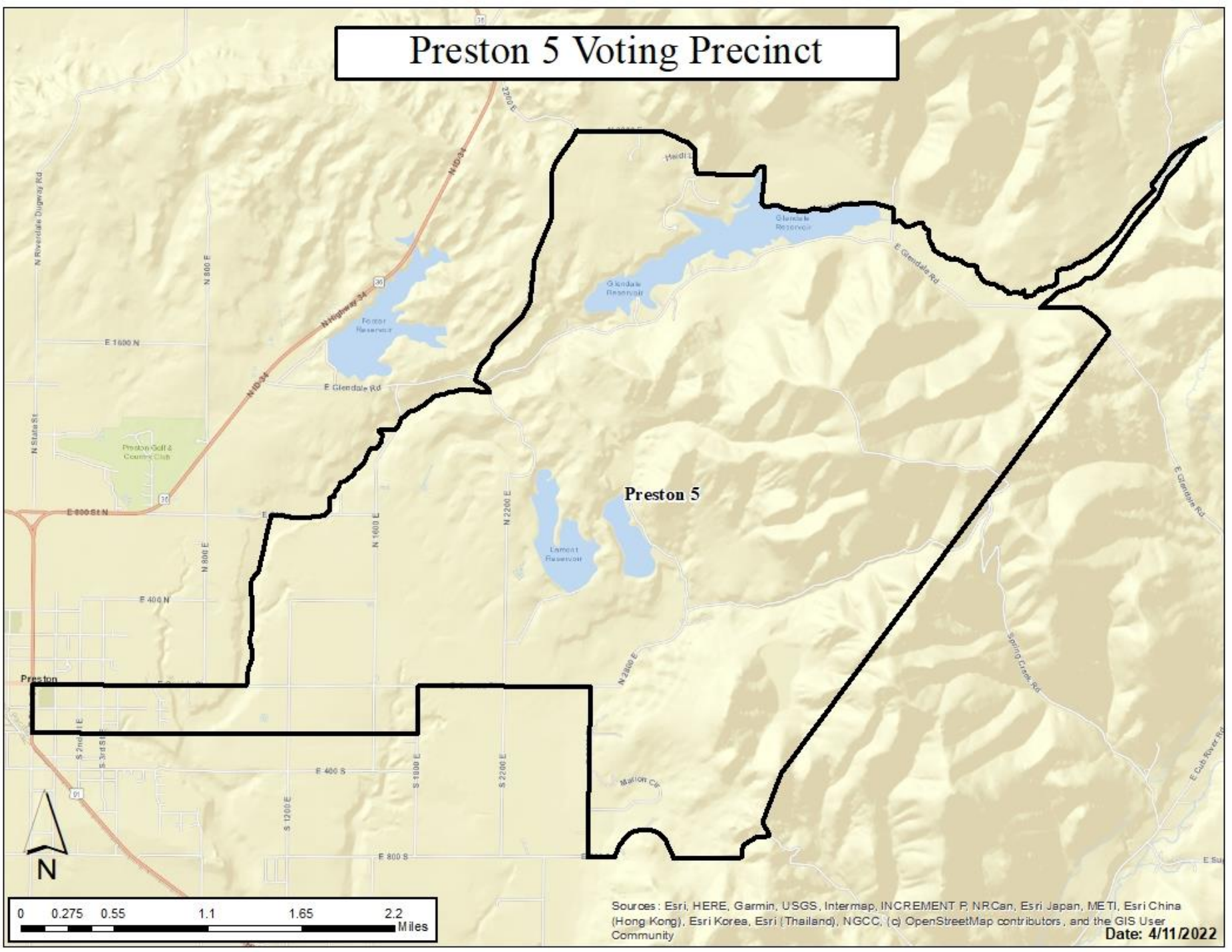
Sources: Esri, HERE, Garmin, USGS, Intermap, INCREMENT P, NRCan, Esri Japan, METI, Esri China (Hong Kong), Esri Korea, Esri (Thailand), NGCC, (c) OpenStreetMap contributors, and the GIS User Community

Date: 4/11/2022

PRESTON # 5

Commencing at the intersection of State Street and Oneida Street;
Thence east along Oneida to Worm Creek;
Thence north along Worm Creek to 2200 East;
Thence north on 2200 East to 2600 North;
Thence east on 2600 North to the Worm Creek;
Thence east along the Worm Creek to a dirt road;
Thence following the dirt road approximately 800 feet to Worm Creek Road;
Thence southwesterly along Worm Creek Road to Glendale Road;
Thence east along Glendale Road to where the Preston water line intersects with Glendale Road;
Thence southwesterly along the ridge line to a peak;
Thence southwesterly to a dirt road;
Thence southeasterly along dirt road to the top Giraffe Hill which is 800 South;
Thence west on 800 South to 2600 East;
Thence north on 2600 East to Oneida Street;
Thence west on Oneida Street to 1800 East;
Thence south on 1800 East to where 200 South intersects with 1800 East;
Thence west to State Street;
Thence north on State Street to the point of beginning.

Preston 5 Voting Precinct



Sources: Esri, HERE, Garmin, USGS, Intermap, INCREMENT P, NRCan, Esri Japan, METI, Esri China (Hong Kong), Esri Korea, Esri (Thailand), NGCC, (c) OpenStreetMap contributors, and the GIS User Community
Date: 4/11/2022

BANIDA-WINDER #6

Commencing at the north boundary of Franklin County where the Union Pacific Railroad intersects with the Franklin County Boundary;

Thence south on the Union Pacific Railroad to the intersection of 7200 North and 4200 West;

Thence south on 4200 West to Twin Lakes Road;

Thence southeasterly on Twin Lakes Road to Little Mountain Road;

Thence south on Little Mountain Road to the power lines;

Thence west, following the power lines in all directional changes of said power lines, until reaching Deep Creek;

Thence southeasterly along Deep Creek to the Bear River;

Thence northwesterly along the Bear River to the diversion dam;

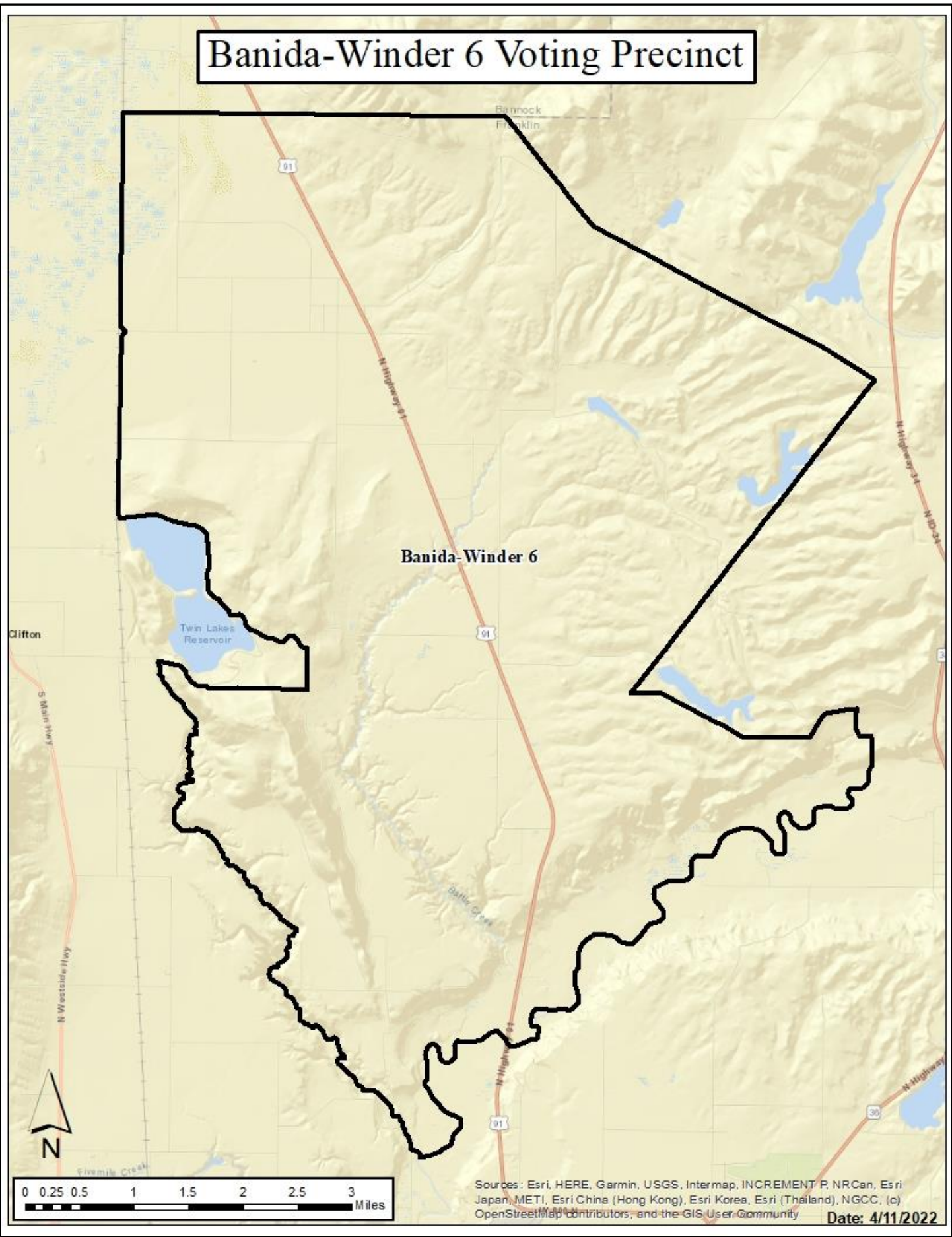
Thence north at the diversion dam, following a farm road, northerly then easterly, to the power lines;

Thence following the power lines west, then northeasterly, following all directional changes of said power lines, until reaching the Treasureton Substation;

Thence northwesterly, continuing to follow said power lines in all directional changes of said power lines until reaching the north boundary of Franklin County;

Thence following the Franklin County line to the point of beginning.

Banida-Winder 6 Voting Precinct



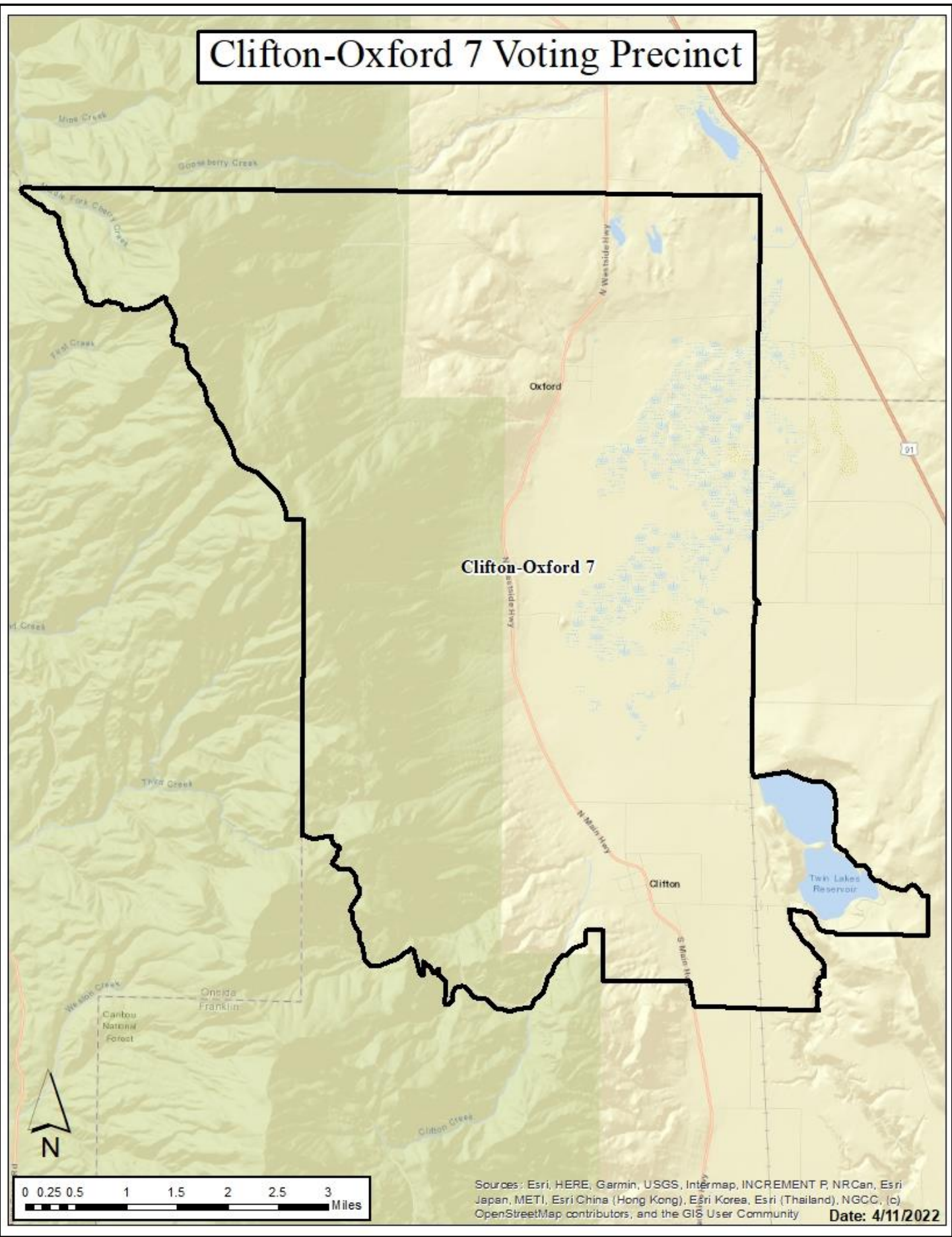
Sources: Esri, HERE, Garmin, USGS, Intermap, INCREMENT P, NRCan, Esri Japan, METI, Esri China (Hong Kong), Esri Korea, Esri (Thailand), NGCC, (c) OpenStreetMap contributors, and the GIS User Community

Date: 4/11/2022

CLIFTON-OXFORD #7

Commencing at the northwest corner of the Franklin County Boundary;
Thence east on the boundary of Franklin County to where the Union Pacific Railroad intersects with the Franklin County Boundary;
Thence south on the Union Pacific Railroad to the intersection of 7200 North and 4200 West;
Thence south on 4200 West to Twin Lakes Road;
Thence southeasterly on Twin Lakes Road to Little Mountain Road;
Thence south on Little Mountain Road to the power lines;
Thence west, following the power lines in all directional changes of said power lines, until reaching Deep Creek;
Thence south along Deep Creek to the section line dividing Sections 26 and 35 of Township 14S, Range 38E;
Thence west on said boundary to the Westside Hwy;
Thence north on the Westside Hwy to the south boundary of Clifton city limits;
Thence west along the Clifton city limit boundary to the west city limit boundary;
Thence north along the west Clifton city limit boundary to Cemetery Road;
Thence west on Cemetery Road to Clifton Creek Road;
Thence southwesterly on Clifton Creek Road to Clifton Creek;
Thence following Clifton Creek to the Clifton Creek Road;
Thence following Clifton Creek Road to Ruben Hollow;
Thence west along Ruben Hollow to the Franklin County Boundary line;
Thence north to the point of beginning.

Clifton-Oxford 7 Voting Precinct



Clifton-Oxford 7

91

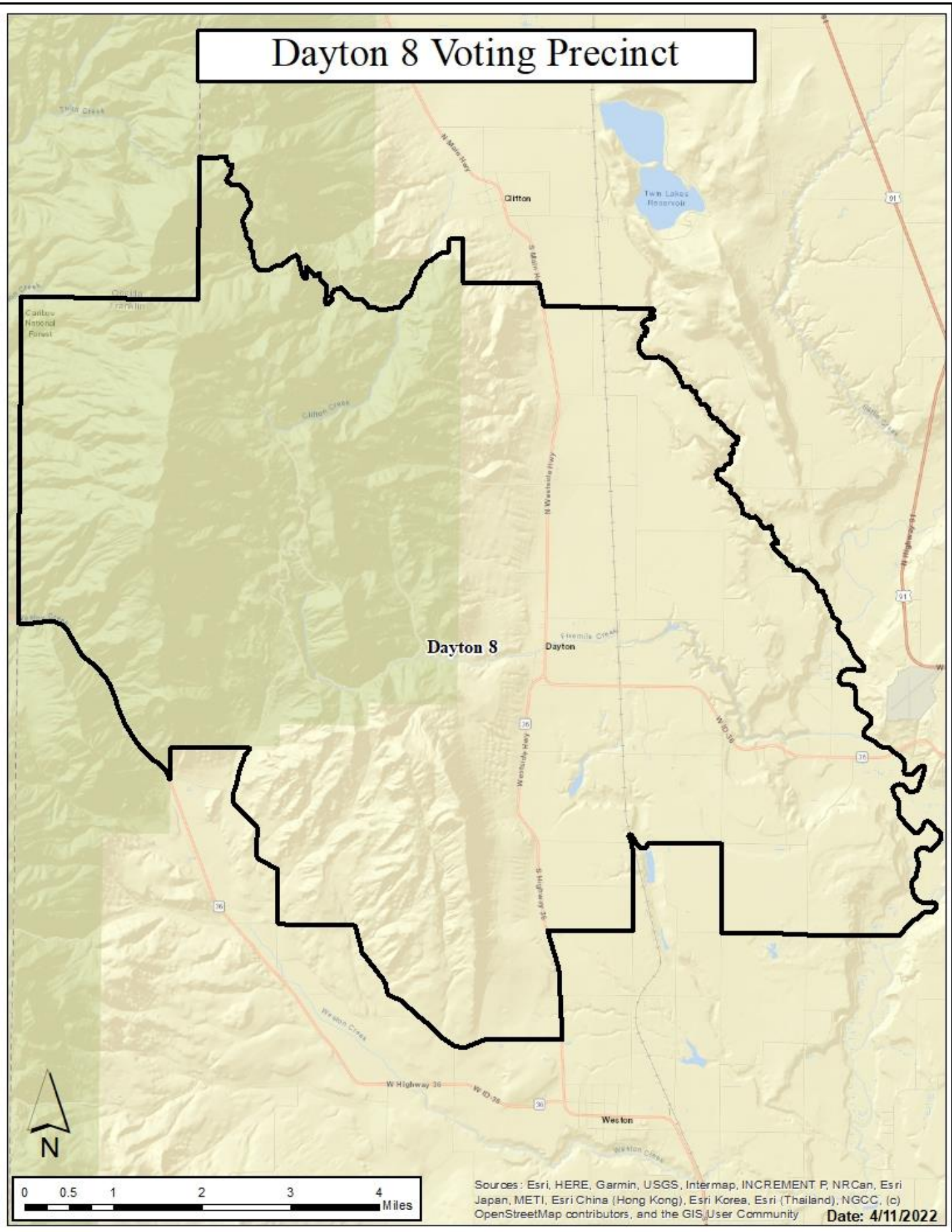
0 0.25 0.5 1 1.5 2 2.5 3 Miles

Sources: Esri, HERE, Garmin, USGS, Intermap, INCREMENT P, NRCan, Esri Japan, METI, Esri China (Hong Kong), Esri Korea, Esri (Thailand), NGCC, (c) OpenStreetMap contributors, and the GIS User Community Date: 4/11/2022

DAYTON #8

Commencing at the west Franklin County boundary line and Highway 36;
Thence southeasterly on Highway 36 to the Caribou-Targhee National Forest boundary;
Thence north ½ mile, then east approximately 1 mile continuing along said boundary to 7200 West;
Thence south on 7200 West to 1600 South;
Thence east on 1600 South to 2700 South;
Thence southeasterly on 2700 South to the Westside Hwy;
Thence north along the Westside Hwy to 1600 South;
Thence east along 1600 South to 4000 West;
Thence north on 4000 West to where it connects with 800 South;
Thence east on 800 South to 3200 West;
Thence south on 3200 West to 1600 South, which is also the township line dividing T15 and T16;
Thence east on 1600 South, also known as the township line T15 and T16 to the Bear River;
Thence northwesterly following the Bear River to the point Deep Creek enters the Bear River;
Thence northwesterly along Deep Creek to the section line dividing Section 26 and 35 of Township 14S, Range 38E;
Thence west on said boundary to the Westside Hwy;
Thence north on the Westside Hwy to the south boundary of Clifton city limits;
Thence west along the Clifton city limit boundary to the west city limit boundary;
Thence north along the west Clifton city limit boundary to Cemetery Road;
Thence west on Cemetery Road to Clifton Creek Road;
Thence southwesterly on Clifton Creek Road to Clifton Creek;
Thence following Clifton Creek to the Clifton Creek Road;
Thence following Clifton Creek Road to Ruben Hollow;
Thence west along Ruben Hollow to the Franklin County Boundary line;
Then south along the Franklin County Boundary, following all directional changes of said boundary, to the point of beginning.

Dayton 8 Voting Precinct



Sources: Esri, HERE, Garmin, USGS, Intermap, INCREMENT P, NRCan, Esri Japan, METI, Esri China (Hong Kong), Esri Korea, Esri (Thailand), NGCC, (c) OpenStreetMap contributors, and the GIS User Community Date: 4/11/2022

FAIRVIEW #9

Commencing at the intersection of 800 East and 1600 South;

Thence south on 800 East to the south boundary of Franklin County;

Thence west along the Franklin County Boundary to the Bear River;

Thence north along the Bear River to 1600 South, which is also the township line dividing T15 and T16;

Thence west along said boundary to the point of beginning.

Fairview 9 Voting Precinct



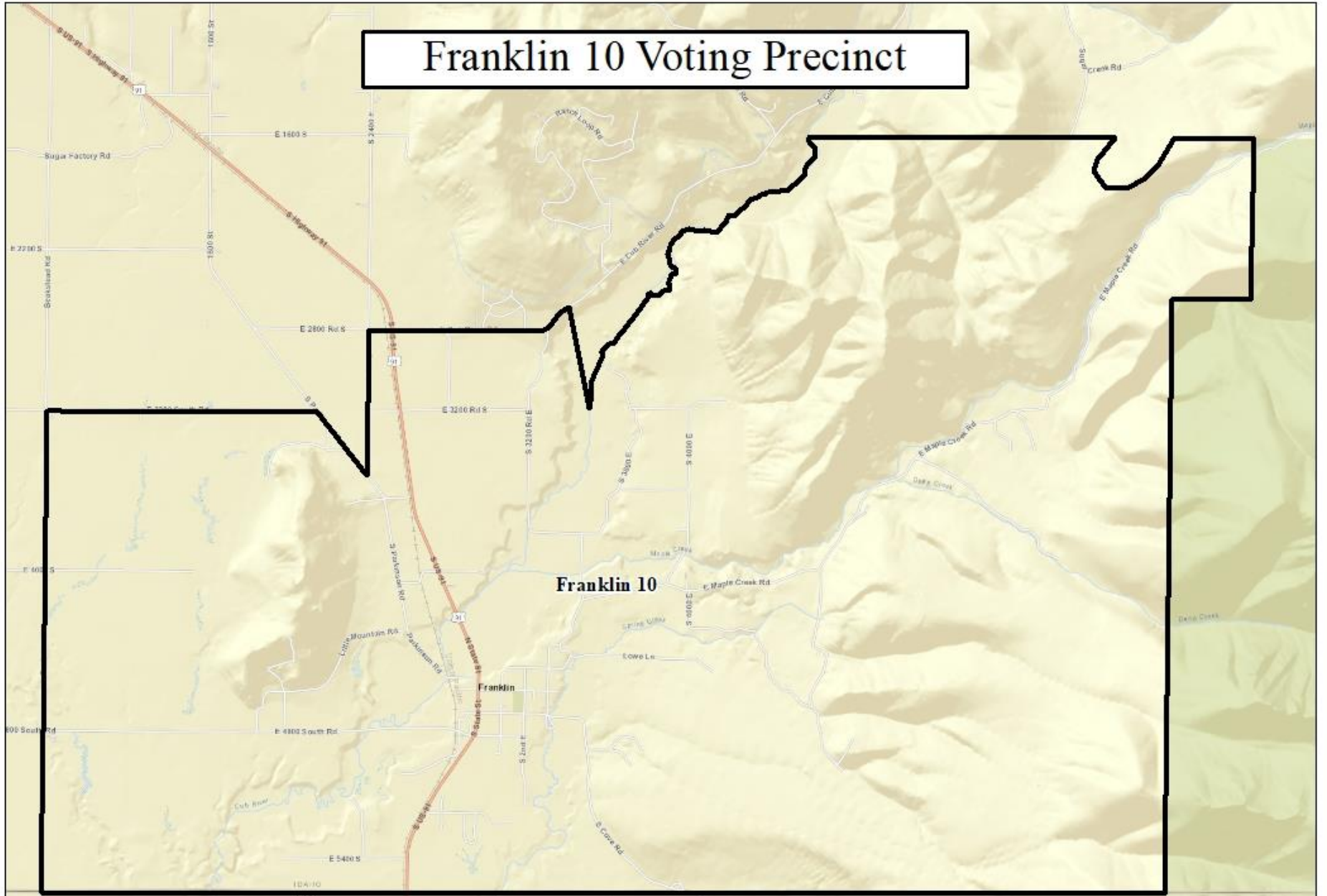
Sources: Esri, HERE, Garmin, USGS, Intermap, INCREMENT P, NRCan, Esri Japan, METI, Esri China (Hong Kong), Esri Korea, Esri (Thailand), NGCC, (c) OpenStreetMap contributors, and the GIS User Community

Date: 4/11/2022

FRANKLIN #10

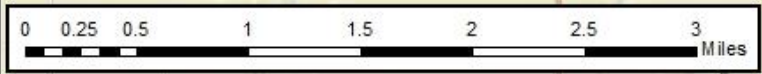
Commencing at the south boundary of Franklin County and 800 East;
Thence north on 800 East to 3200 South;
Thence east on 3200 South to Parkinson Road;
Thence southeasterly on Parkinson Road to 2400 East;
Thence north on 2400 East to 2800 South;
Thence east along 2800 South to Cub River Road;
Thence east on Cub River Road to the power lines;
Thence southeasterly along power lines to the Cub River;
Thence northeasterly along the Cub River to the township line dividing T16 and T15;
Thence east along the township line to the Morgan Ridge Bluff;
Thence east around the Morgan Ridge Bluff to where Maple Creek Road enters the forest;
Thence south 1 mile along the Caribou-Targhee National Forest boundary line, then west ½ mile, then south 4 miles, still following the Caribou-Targhee National Forest boundary, to the Franklin County boundary line;
Thence west along said boundary to the point of beginning.

Franklin 10 Voting Precinct



Franklin 10

Franklin

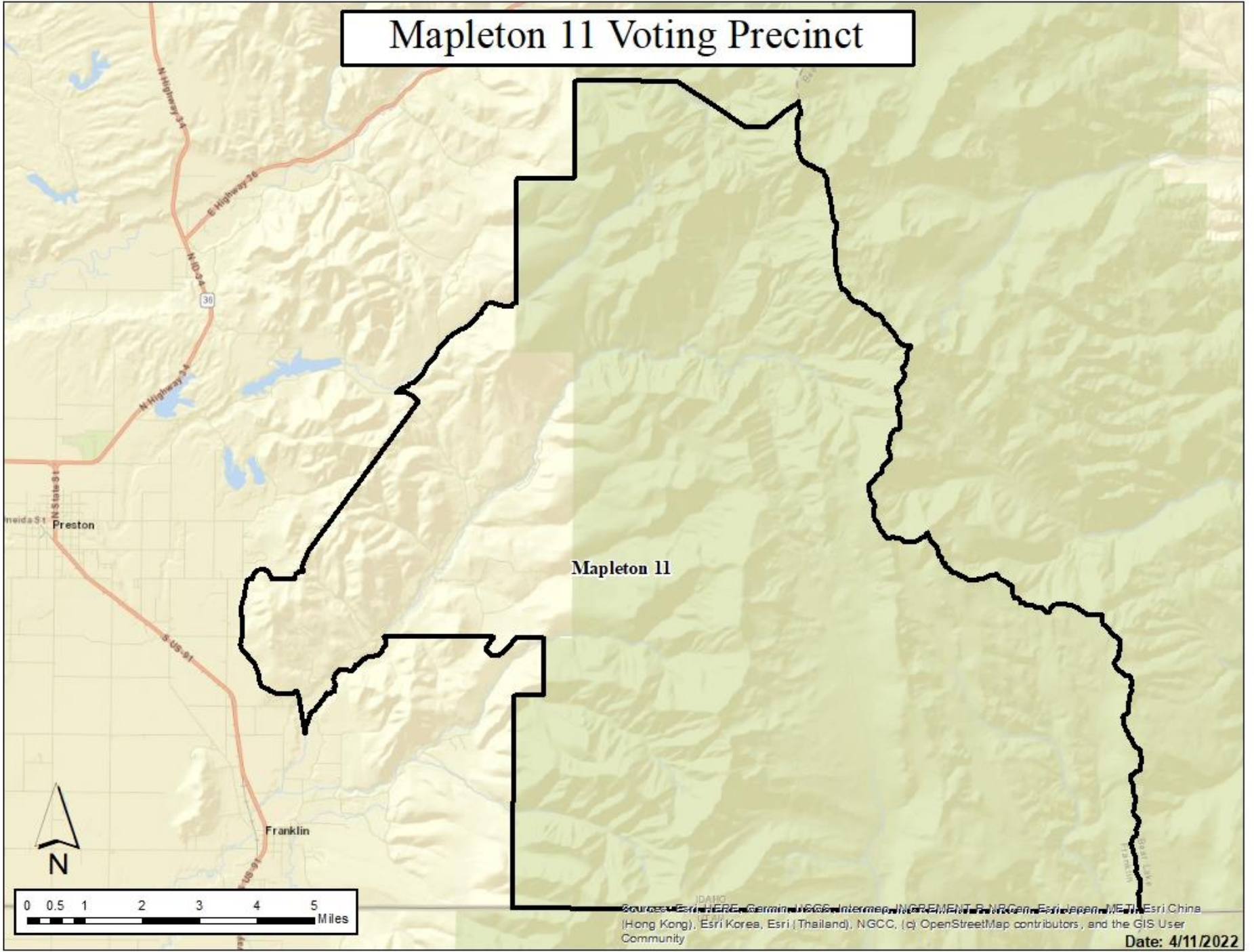


Sources: Esri, HERE, Garmin, USGS, Intermap, INCREMENT P, NRCan, Esri Japan, METI, Esri China (Hong Kong), Esri Korea, Esri (Thailand), NGCC, (c) OpenStreetMap contributors, and the GIS User Community
Date: 4/11/2022

MAPELTON #11

Commencing at the southeast corner of the Franklin County Boundary;
Thence west along said boundary to the Caribou-Targhee National Forest boundary line;
Thence north 4 miles along the Caribou-Targhee National Forest boundary line, then east ½ mile, then north 1 mile to the point where Maple Creek Road enters the forest;
Thence west around the Morgan Ridge Bluff to the township line dividing T16 and T15;
Thence west along the township line to the Cub River;
Thence southwesterly along the Cub River to the power lines;
Thence north following the power lines to the Middle Ditch;
Thence west at the Middle Ditch, following said ditch in a northerly direction to 800 South;
Thence east on 800 South to the top of Giraffe Hill,
Thence northeasterly on a dirt road, following the dirt road to a peak;
Thence northeasterly along the ridge line to Glendale Road where the Preston water line intersects with Glendale Road;
Thence northwesterly on Glendale Road to Worm Creek Road;
Thence northeasterly on Worm Creek Road to the Caribou-Targhee National Forest boundary line;
Thence north 2 miles along the Caribou-Targhee National Forest Boundary;
Thence east 1 mile along the Caribou-Targhee National Forest Boundary;
Thence north 1 ¾ mile along the Caribou-Targhee National Forest boundary to the power line;
Thence east along the power lines, following all directional changes of said power lines, until reaching the Franklin County boundary;
Thence south along the Franklin County Boundary line, following all directional changes of said boundary to the point of beginning.

Mapleton 11 Voting Precinct



Source: Esri, HERE, Garmin, USGS, Intermap, INCREMENT P, NGC, Esri Japan, Esri Korea, Esri (Thailand), NGCC, (c) OpenStreetMap contributors, and the GIS User Community

Date: 4/11/2022

MINK CREEK #12

Commencing at Highway 36 and the Bear River;

Thence north along the Cub River to the south end of the Oneida Narrows Substation;

Thence southeasterly to the Oneida Narrows Road;

Thence northeasterly along the Oneida Narrows Road to the south end of the Oneida Reservoir;

Thence along the east water line of the Oneida Reservoir to Maple Grove Hot Springs Road;

Thence southeasterly along said road until reaching the power lines;

Thence following the power lines, in all directional changes of said power line, to the Franklin County Boundary;

Thence south along said boundary until reaching the power lines;

Thence west along the power lines, following all directional changes of said power lines, until reaching the Caribou-Targhee National Forest boundary;

Thence south $1\frac{3}{4}$ miles along the Caribou-Targhee National Forest Boundary;

Thence west 1 mile along the Caribou-Targhee National Forest Boundary;

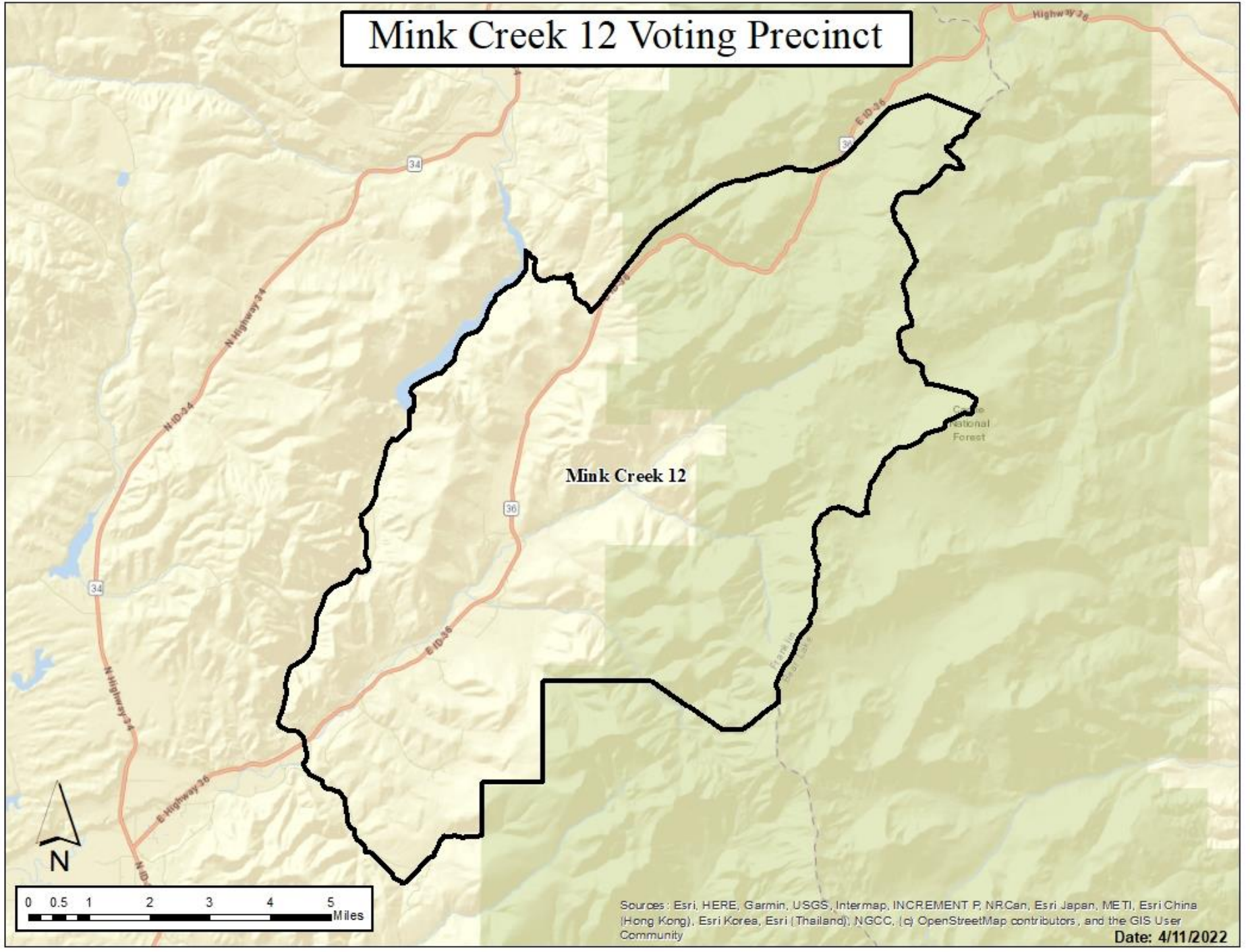
Thence south $\frac{3}{4}$ miles to Station Creek Road;

Thence west along Station Creek Road to Station Creek;

Thence following Station Creek, in all directional changes of said creek, until reaching the Bear River;

Thence following the Bear River to the point of beginning.

Mink Creek 12 Voting Precinct



Sources: Esri, HERE, Garmin, USGS, Intermap, INCREMENT P, NRCan, Esri Japan, METI, Esri China (Hong Kong), Esri Korea, Esri (Thailand), NGCC, (c) OpenStreetMap contributors, and the GIS User Community

Date: 4/11/2022

CLEVELAND #13

Commencing at the Oneida Narrows Dam;

Thence along the east water line of the Oneida Reservoir to the Bear River;

Thence northerly along the Bear River, following all directional changes of said river, to the Franklin County Boundary line;

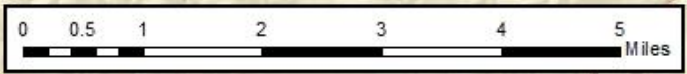
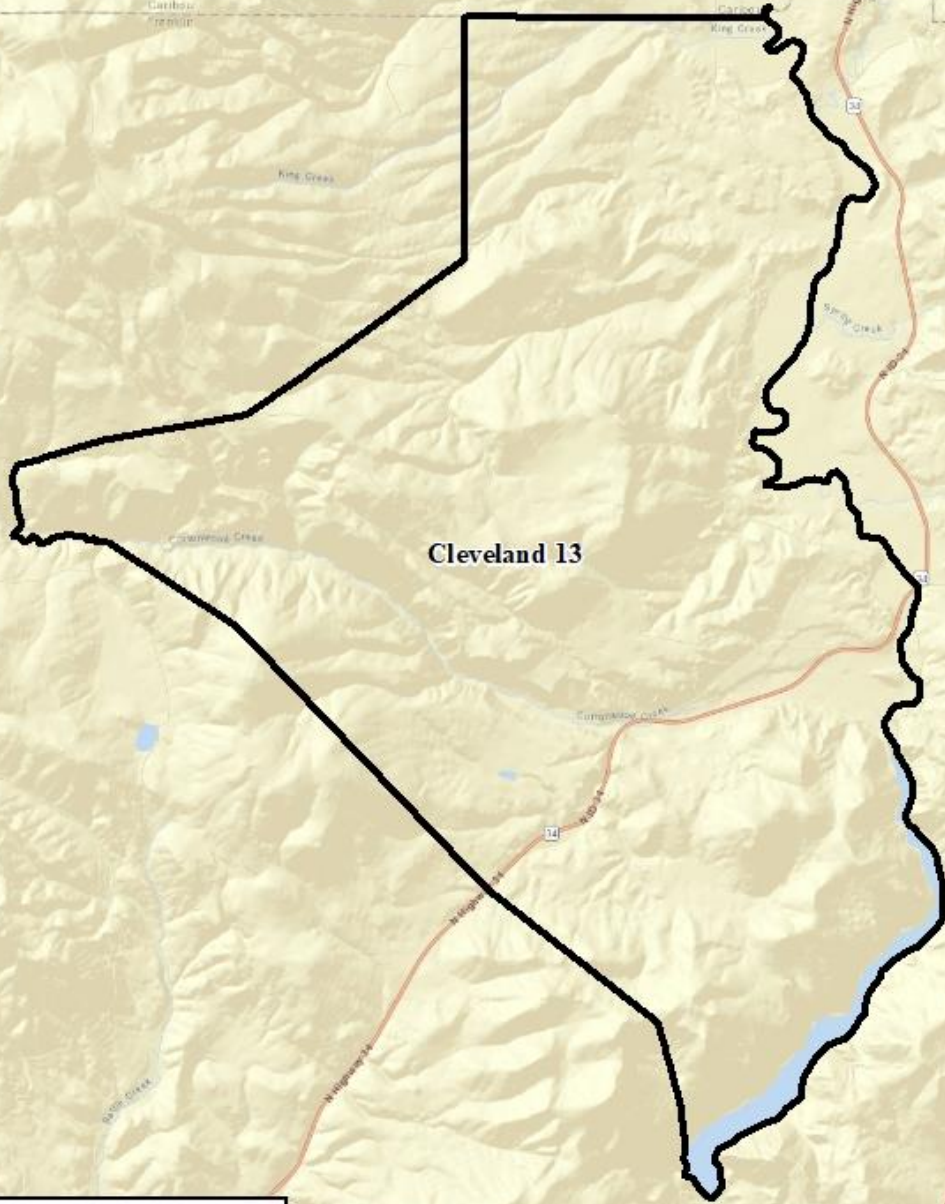
Thence west along said boundary line approximately 2 ½ miles to the power lines;

Thence south along the power lines to the southeast of Section 9, Township 12 Range 40E,

Thence along the power lines southwest to the mountain ridge line in Section 24, Township 12, Range 39E;

Thence following the ridge line southeasterly to the point of beginning.

Cleveland 13 Voting Precinct



Sources: Esri, HERE, Garmin, USGS, Intermap, INCREMENT P, NRCan, Esri Japan, METI, Esri China (Hong Kong), Esri Korea, Esri (Thailand), NGCC, (c) OpenStreetMap contributors, and the GIS User Community
Date: 4/11/2022

RIVERDALE #14

Commencing at the north Franklin County Boundary line, approximately 2 ½ miles west of the Bear River, at the power lines;

Thence south along the power lines to the southeast of Section 9, Township 12 Range 40E,

Thence along the power lines southwest to the mountain ridge line in Section 24, Township 12, Range 39E;

Thence following the ridge line southeasterly to the Oneida Narrows Dam;

Thence southeasterly along the south end of the Oneida Reservoir on dirt road to the Onieda Narrows Road;

Thence south on the Oneida Narrows Road to the south end of the Oneida Narrows Substation;

Thence northwesterly to the Bear River;

Thence south along the Bear River to Station Creek;

Thence following Station Creek, in all directional changes of said creek, until reaching a point where the Creek intersects with Station Creek Road;

Thence along Station Creek Road to the Caribou-Targhee National Forest boundary line;

Thence south 1 ¼ miles along the Caribou-Targhee National Forest boundary to the Worm Creek Road;

Thence following the Worm Creek Road 1 ½ miles to a dirt road;

Thence along the dirt road 800 feet to Worm Creek;

Thence west along Worm Creek to 2600 North;

Thence west on 2600 North to 2200 East;

Thence west on 2200 East to Highway 34;

Thence south on Highway 34 approximately 875 feet to a dirt road;

Thence east at the dirt road following the river bluff to the Bear River;

Thence northwesterly along the Bear River to the diversion dam;

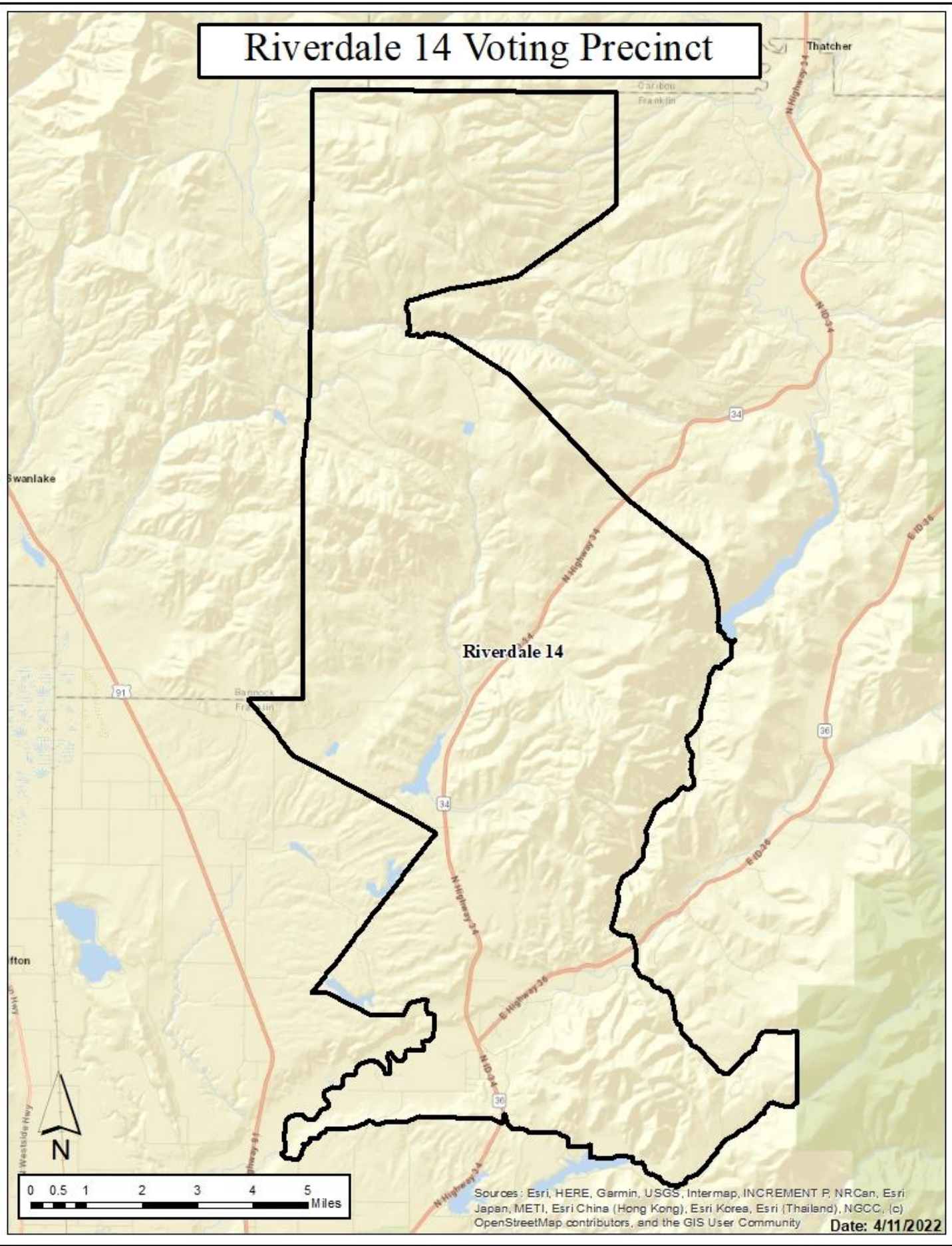
Thence north at the diversion dam, following a farm road, northerly then easterly, to the power lines;

Thence following the power lines west, then northeasterly, following all directional changes of said power lines, until reaching the Treasureton Substation;

Thence northwesterly, continuing to follow the power lines in all directional changes of said power lines until reaching the north boundary of Franklin County;

Thence following the Franklin County boundary line east 1 mile, north 11 miles, then east 5 ½ miles to the point of beginning.

Riverdale 14 Voting Precinct



Riverdale 14

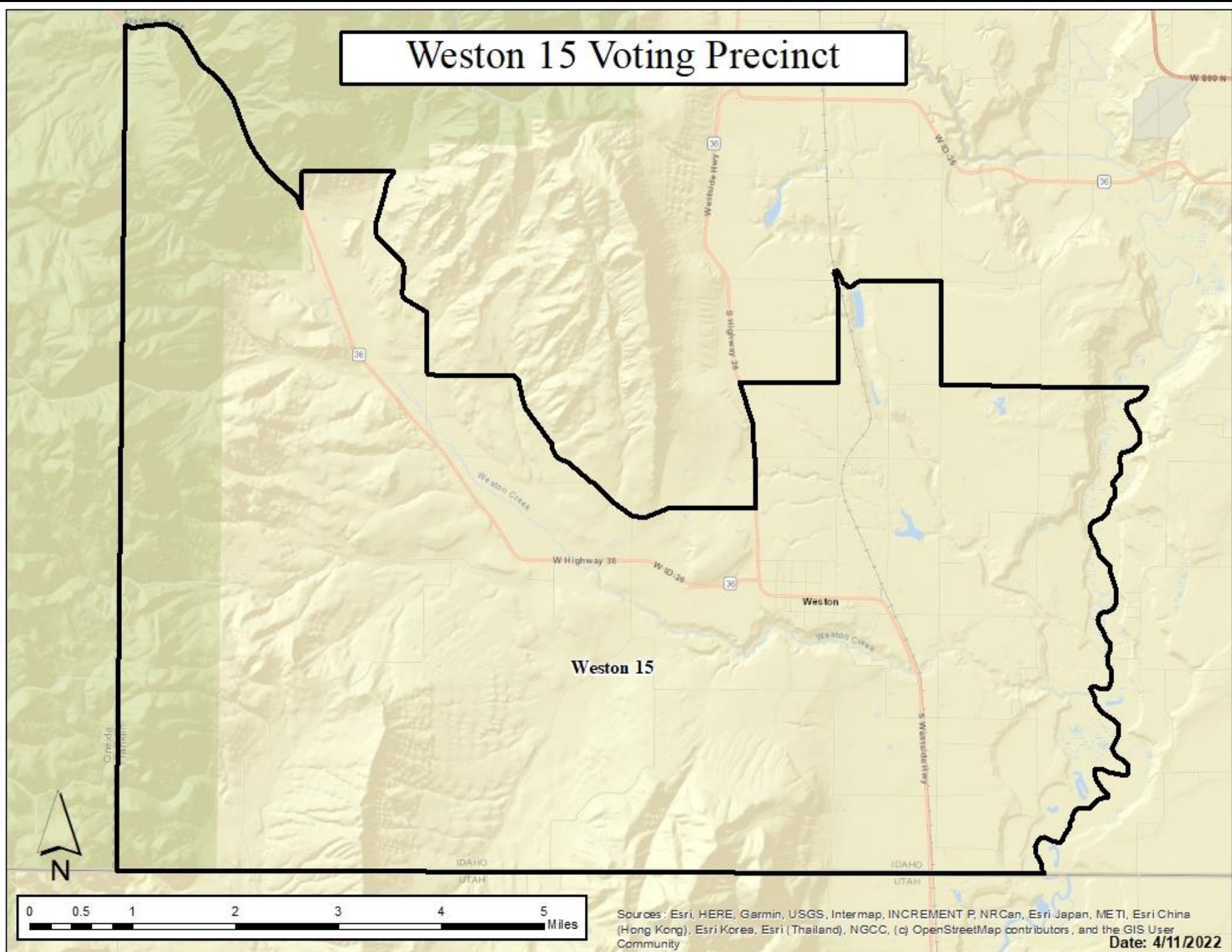
Sources: Esri, HERE, Garmin, USGS, Intermap, INCREMENT P, NRCan, Esri Japan, METI, Esri China (Hong Kong), Esri Korea, Esri (Thailand), NGCC, (c) OpenStreetMap contributors, and the GIS User Community

Date: 4/11/2022

WESTON #15

Commencing at the west Franklin County boundary line and Highway 36;
Thence southeasterly on Highway 36 to the Caribou National Forest boundary;
Thence north ½ mile, then east approximately 1 mile continuing along said boundary to 7200 West;
Thence south on 7200 West to 1600 South;
Thence east on 1600 South to 2700 South;
Thence south easterly on 2700 South to the Westside Hwy;
Thence north along the Westside Hwy to 1600 South;
Thence east along 1600 South to 4000 West;
Thence north on 4000 West to where it connects with 800 South;
Thence east on 800 South to 3200 West;
Thence south on 3200 West to 1600 South, which is also the boundary between Townships 15 and 16;
Thence east on 1600 South, also known as the boundary between Townships 15 and 16 to the Bear River;
Thence south following the Bear River to the south Franklin County boundary line;
Thence West along said boundary line to the south west corner of the Franklin County Boundary;
Thence north along the Franklin County Boundary to the point of beginning.

Weston 15 Voting Precinct



Sources: Esri, HERE, Garmin, USGS, Intermap, INCREMENT P, NRCan, Esri Japan, METI, Esri China (Hong Kong), Esri Korea, Esri (Thailand), NGCC, (c) OpenStreetMap contributors, and the GIS User Community
Date: 4/11/2022

WHITNEY #16

Commencing at the intersection of Oneida Street and 1800 East;

Thence east on Oneida Street to 2600 East;

Thence south on 2600 East to 800 South;

Thence east on 800 South to the Middle Ditch;

Thence south along the Middle Ditch to the power lines;

Thence southeasterly along power lines to the Cub River Road;

Thence west on Cub River Road to 2400 East;

Thence south on 2400 East to Parkinson Road;

Thence northwesterly on Parkinson Road to 3200 South;

Thence west on 3200 South to 800 East;

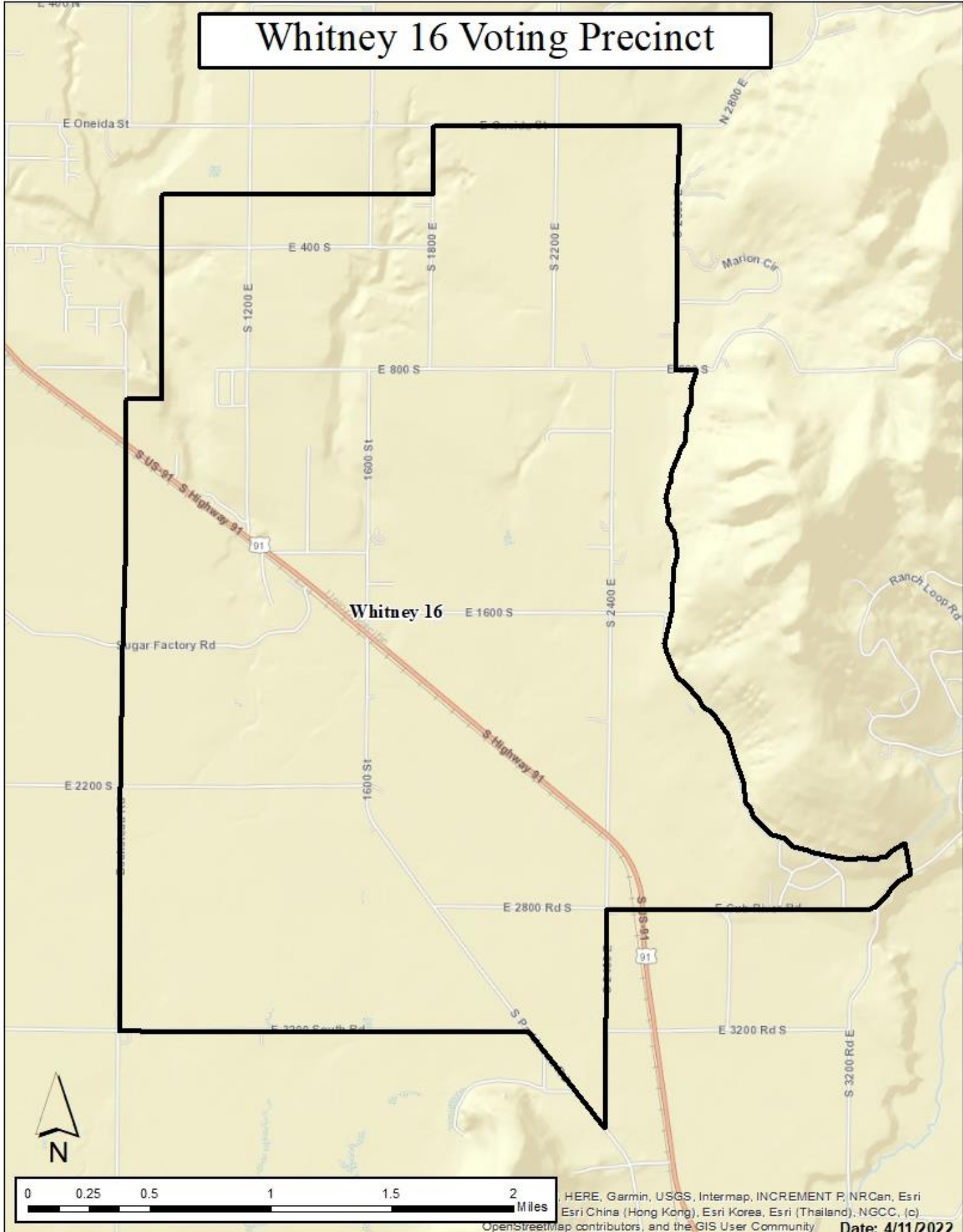
Thence north on 800 East to approximately 890 South;

Thence following the original city limit boundary east approximately 790 feet, then north .84 miles to 200 East;

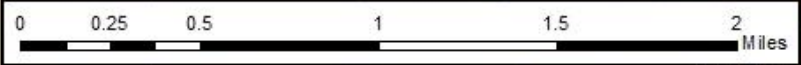
Thence east on 200 East to 1800 East;

Thence north on 1800 East to the point of beginning.

Whitney 16 Voting Precinct



Whitney 16



WORM CREEK #17

Commencing at the intersection of State Street and 300 North;

Thence east on 300 North to 200 East;

Thence north on 200 East to 400 North;

Thence east on 400 North approximately 1 mile to Worm Creek;

Thence north along Worm Creek to 2200 East;

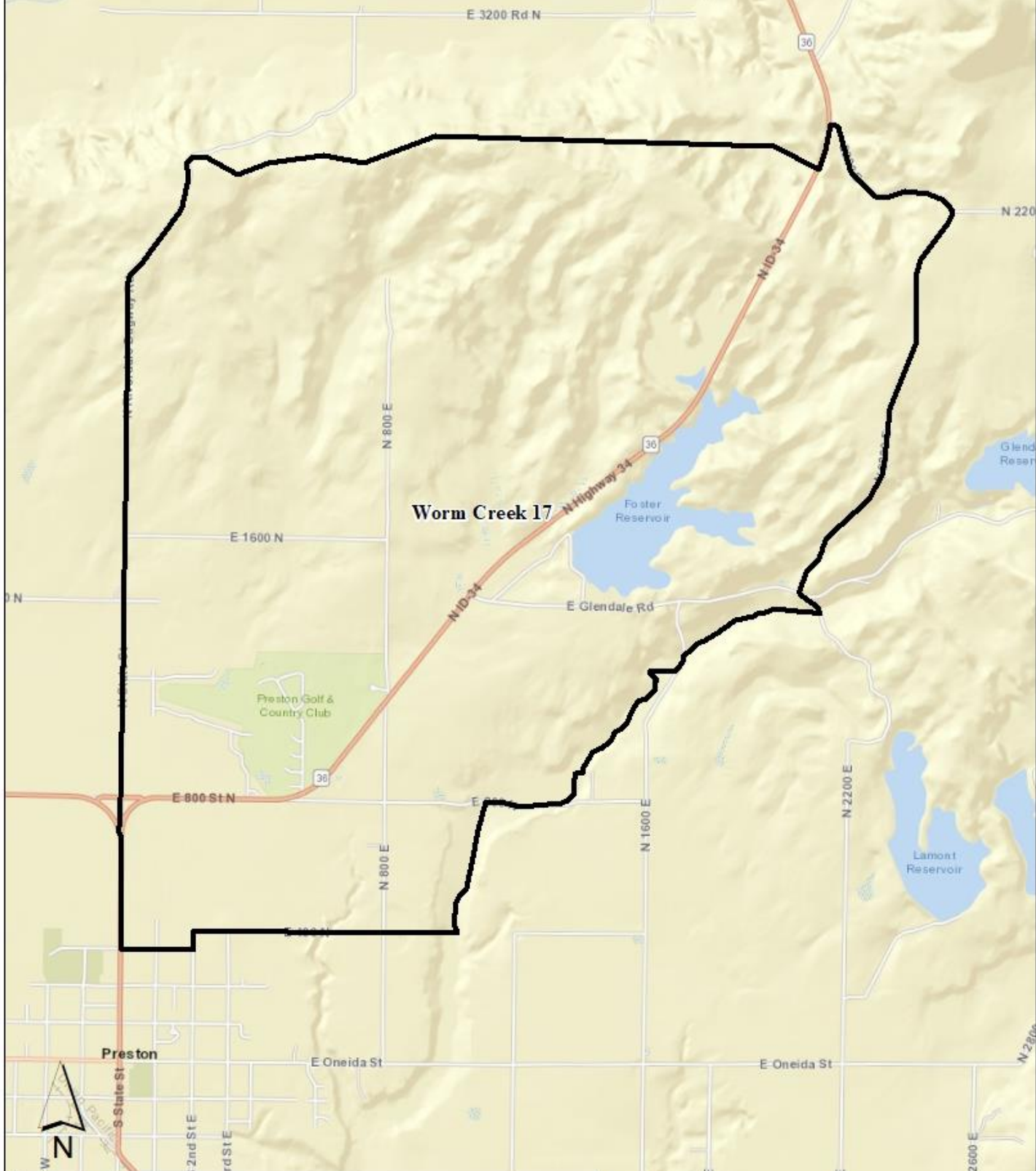
Thence north on 2200 East to Highway 34;

Thence south on Highway 34 approximately 875 feet to a dirt road;

Thence east at the dirt road following the river bluff to the Dugway Road;

Thence south on the Dugway Road, Dugway Road merges into State Street, continuing south on State Street to the point of beginning.

Worm Creek 17 Voting Precinct



HERE, Garmin, USGS, Intermap, INCREMENT P, NRCan, Esri
Esri China (Hong Kong), Esri Korea, Esri (Thailand), NGCC, (c)
OpenStreetMap contributors, and the GIS User Community

Date: 4/11/2022

MOUND VALLEY #18

Commencing at the northeast corner boundary of Franklin County;

Thence west along said boundary line, following all directional changes to said boundary, until reaching the Bear River;

Thence south along the Bear River to Oneida Reservoir;

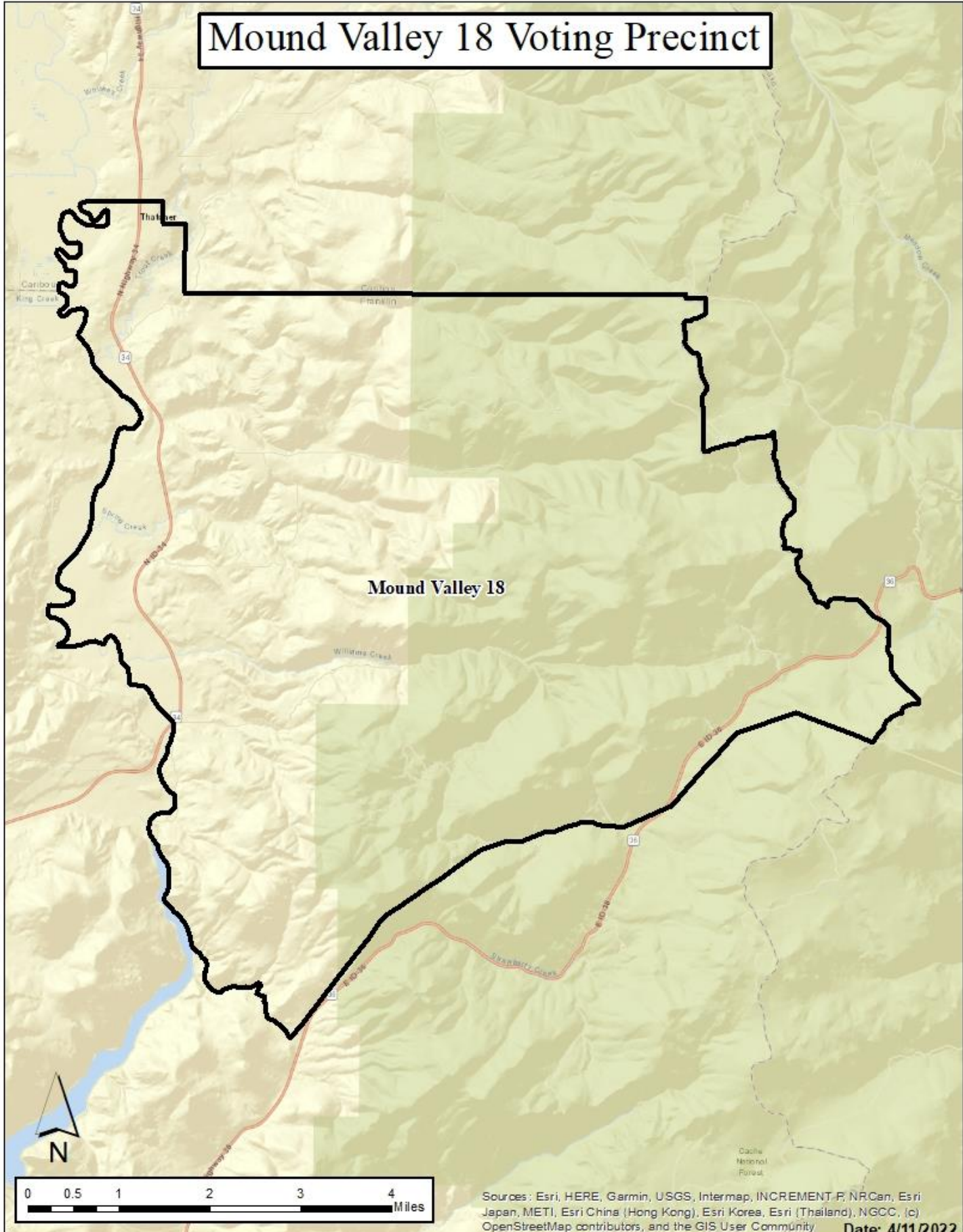
Thence along the east water line of Oneida Reservoir to Maple Grove Hot Springs Road;

Thence southeasterly along said road until reaching the power lines;

Thence following the power lines, in all directional changes of said power line, to the Franklin County Boundary;

Thence north along said boundary to the point of beginning.

Mound Valley 18 Voting Precinct



Mound Valley 18



Sources: Esri, HERE, Garmin, USGS, Intermap, INCREMENT P, NRCan, Esri Japan, METI, Esri China (Hong Kong), Esri Korea, Esri (Thailand), NGCC, (c) OpenStreetMap contributors, and the GIS User Community Date: 4/11/2022